

OXYGEN

Rider (Backline Show)

Bookings / General Information

Herwin Lokken | +31 6 51 15 81 50 | herwin@meproductions.nl

Audio Engineer

Luimes AV | Tom Durieux | +31 6 12 94 45 98 | tom@luimesav.nl

Bandmanager

Berend Zandbergen | +31 6 30 13 31 23 | berend@meproductions.nl

IMPORTANT: What do we take with us? And what should the organizer provide?

We will bring ourselves:

- Backline
- All microphones
- Power distribution and power strips on stage
- FOH table
- In-ear monitors
- Infrastructure: XLR cables, microphone stands, multicores with stage boxes
- Stage block with 32-channel analog split
- Lighttable
- SFX on stage

The organizer is responsible for providing:

- Stage + barriers (if necessary)
- Power supply (1x CEE 32A, 400v)
- PA system- 2 CAT-lines (CAT5e or higher)
- 2 rolling risers for drums and keys, each measuring 2x2 meters and 40 cm high
- Light set

Production Check

No later than 2 weeks before the show, we will call the technical team and the organizer to coordinate all aspects of our rider. Any missing or unresolved issues will be addressed during the production check.

Times:

The venue will be accessible to the technicians at least 3 hours before the start of the event. The band's crew will be present at least 2 hours before the start for loading/unloading and setting up the show. The stage should be ready and accessible for the setup crew from that moment. Immediately after the performance, the crew should be able to start dismantling and loading the equipment without hindrance. The crew will dismantle promptly after the performance but cannot provide an exact timeframe for the dismantling.

Stage:

The minimum dimensions of the usable stage are 8m x 5m x 0.6m (W x D x H). This is the free playing area, excluding any equipment present.

The drums and keyboards are both placed on a riser. These need to be arranged by the client! Preferably, they should be movable.

- 2 x Riser: 2m x 2m x 0,4 m (B x D x H)

The stage must be constructed using professional materials suitable and approved for stage construction. Pallets or self-built structures will never be accepted. The roof structure must be waterproof and resistant to rain and wind. Additionally, the roof structure must be built using safe and approved materials.

Barriers

To ensure the safety of the audience and the band, we ask the organizers to provide the following:

- Barriers for the stage (to prevent the audience from accessing the SFX). These barriers must be at least 2 meters away from the stage and cover the entire width of the stage.
- Due to the extensive production, valuable equipment, and the use of SFX, we request security personnel stationed front stage within the barrier on-site to ensure the safety of band members, audience, and equipment.

Transport & Loading/Unloading:

The crew will arrive with a box truck measuring 9m x 3m x 4m (L x W x H). This truck must be able to be unloaded directly onto the stage or through a loading dock without any level differences. The distance between the loading/unloading area and the stage must not exceed 25 meters and should not contain any obstacles or stairs. All equipment must be able to reach the stage at all times by rolling.

The stage is equipped with functioning working lights upon the crew's arrival. Our materials are **NOT** lift-able. The clearance from the loading/unloading area to the stage must be at least 2 meters high and 2 meters wide. Doors (including elevator doors) must be a minimum of 2.2 meters high and 2 meters wide (due to the dimensions of flight cases). **If this is not possible, always consult with Luimes AV first about a possible solution.**

PARKING:

The box truck will need to be able to park behind the stage during the performance. If this is not possible, the client must arrange a safe parking spot for the box truck. In addition to the truck, the band will arrive with 3 passenger cars. Safe parking spaces must also be arranged for these cars.

Any parking fees are the responsibility of the client.

ELECTRICITY:

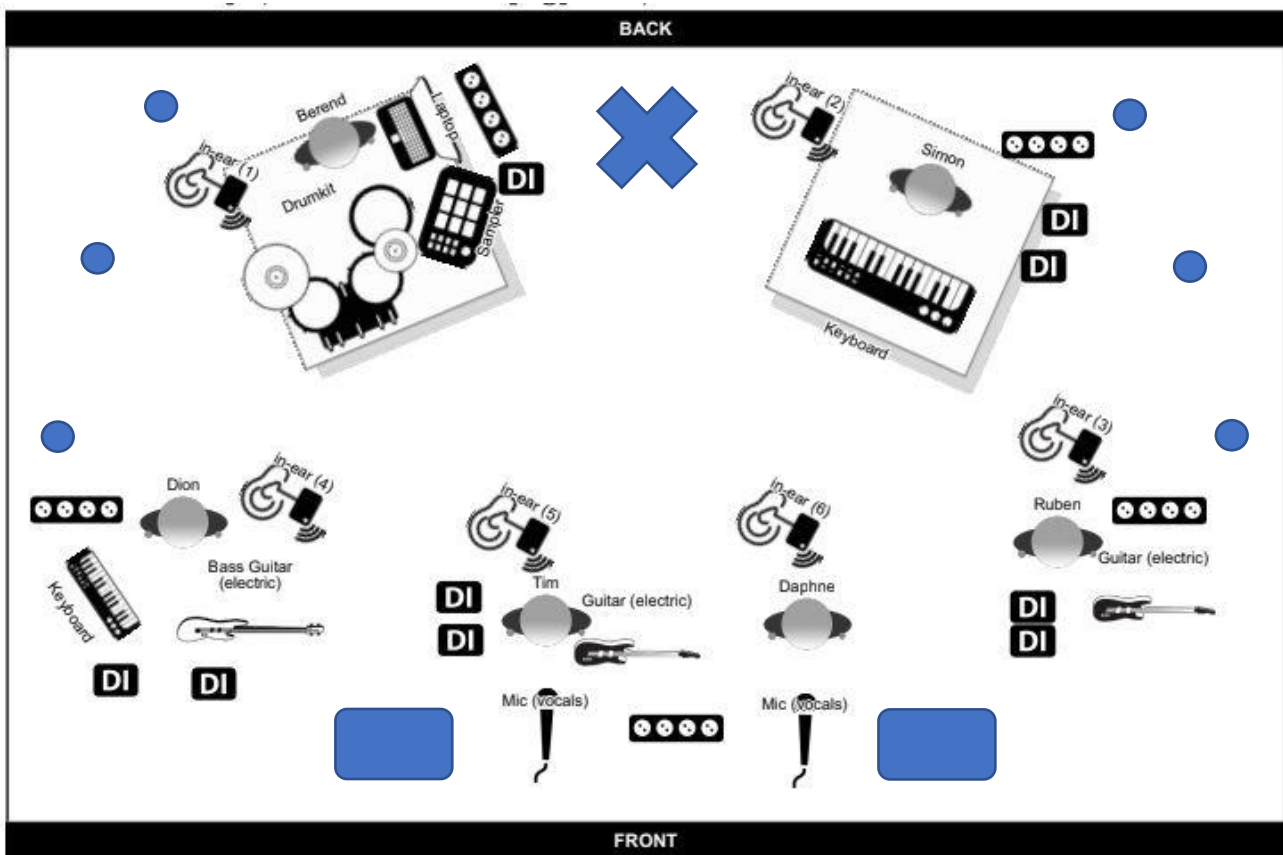
Please provide 1x CEE 32A, 400v power supply, preferably stage left. This supply must be separate from other users and equipped with proper grounding. The connection should be within 10m of the stage. We will handle the power distribution ourselves.

BACKLINE // MONITORING // FOH // SFX:

The crew will bring the complete backline, infrastructure, monitoring, and SFX for the stage. OXYGEN will travel with their own FOH table, lighting console, and engineers. For the FOH position, a space of 3m x 2m (W x D) needs to be set up in the venue, equipped with crowd barriers. If the event takes place outdoors, this area should be provided with an adequate (water/windproof) covering.

The FOH position must always be between the coverage of the speakers, never under a balcony. Additionally, it should be placed centrally in front of the stage, at 1/3 of the length of the venue, up to a maximum of 20 meters from the stage. Preferably, it should be on the ground, but if not possible, it can be elevated on a minimal platform (maximum 30 cm).

Stageplan



- = LED strips (standing upright)
- ✕ = Een X made of van LED strips
- = Egoriser



P.A. System Requirements:

- A professional P.A. system (l'Acoustics, Adamson, Meyer Sound, D&B Audiotechnik, Martin Audio, EV, EAW, Sound Projects, Nexo, and RCF).
- The system is capable of producing 103dBA at the FOH Position.
- No compressor or limiter on the system.P

Lighting Requirements:

Please provide an adequate number of LED lamps (RGBW or RGBWA) to evenly and effectively illuminate the stage. For conventional backlighting, please filter the colors using (Lee) CL106, L126, and open white. The lighting must be operational, focused, and patched upon OXYGEN's arrival.

If possible, please provide:

- Sufficient front light (wash) to evenly illuminate the stage. Ensure that the 2 up-stage risers are also well lit!
- 8x Audience Blinder (Twolight / Fourlight)
- 4x Martin Atomic 3000 (or similar strobe with blackout function)
- 8x moving light (spot) with CMY color mixing
- 8x moving light (wash)
- 2x smoke machine / hazer + fan controllable from the lighting console with sufficient output to evenly distribute smoke across the entire stage.

SOUNDRESTRICTIONS:

The band will produce a significant sound volume during the soundcheck and the show. If there are any restrictions, please let us know well in advance.

SOUNDCHECK:

The crew will make noise during setup while calibrating the sound system. The band will also conduct a soundcheck within the setup time. This will occur at the same sound level as the show. The client guarantees that during this period, a complete light- and soundcheck can be executed.

In the case of a change-over (festival):

For a smooth change-over, the band and crew require a space behind the stage of at least 16m² at the same level as the stage. This space must be completely clear for equipment. Setup at least 1 hour before the show begins. Please also set up the rolling risers in this area. A minimum of 45 minutes is needed for the change-over, starting from the moment the act before OXYGEN clears the stage. If there are any doubts about this point, please contact MEProductions.

Dressing Room:

- The client must provide a heated and well-lit space for dressing and other preparations.
- This room must be able to be closed so that band members can safely store their personal belongings.
- The room should accommodate at least 9 people; with 9 chairs, a large table, running water, clean towels, and a mirror.
- The band can use the consumables mentioned below in this room.
- There should be a toilet nearby that is not accessible to event attendees. It is also undesirable for band members to have to walk through the crowd to access it.

Catering:

- If the arrival time is before 8:00 PM, the client must provide a nutritious meal for the band and crew (9 people). Please consider accommodating 1 vegetarian. OXYGEN prefers healthy food over fast food.
- 24 bottles of still water for the band and crew before and during the performance.
- Assorted soft drinks, coffee/tea, snacks.
- Sandwiches after the performance are not mandatory but would be greatly appreciated.

Guest List:

If applicable, we would like to be able to place a minimum of 6 guests on the guest list. For example, additional personnel for recording purposes, etc. The number of persons is always subject to prior consultation.

SAFETY:

Both musicians and crew are accustomed to changing conditions that occur in practice. Enthusiastic crowds are a good thing, but musicians and crew should not become targets. Throwing drinks regularly towards the stage or mixing position is a reason to end the performance. Warnings will always precede this, but if it continues, we will be forced to end the performance. Weather conditions can also be disruptive. Rain with thunderstorms, lightning results in an immediate cessation of the performance. If, in the judgment of the musicians or crew, the conditions endanger their safety, they have the right to cease the performance. If the performance is wholly or partially terminated due to these conditions, this will not affect your financial obligation regarding this show.

ADDITIONALLY:

The conditions mentioned in this rider are solely intended to ensure that the performance runs as smoothly as possible for both you as the client and for the band and crew.

If you are unable to meet the conditions, please contact MEProductions or Luimes AV so that we can assess whether it can be resolved beforehand. **OXYGEN will always look for a solution!**